

## Light weight solar corrugate metal roofing



### FEATURES:

- Corrugate metal roofing with PV together 2 in 1. Using ETFE, EVA resin, solar cells, backsheet and prepainted Steel corrugate for outdoor use.
- Bypass diode is attached minimize power reduction cause by shade.
- Avoids the expense of rocks. No roof penetrations. Aesthetically superior.
- Laminates are lightweight and easy to install.
- Synchronized PV and roofing warranty, 10 years limited warranty of 90% and 20 years limited warranty of 80% power output.

ELECTRICAL CHARACTERISTICS			
Module Type	AP-PVROOF-319	AP-PVROOF-315	AP-PVROOF-522
Pmax (W)	100	150	200
Vpm (V)	12.4	18.7	24.9
Ipm (A)	8.06	8.0	8.07
Voc (V)	14.9	22.4	29.8
Isc (A)	8.55	8.5	8.41
Cell No.	24	36	48
Cell Efficiency (%)	17.6	17.6	17.6
Max. system Voltage (V)	600		
Series Fuse rating (A)	12		
Performance Tolerance	+3%		

APLUS ENERGY CO., LTD.

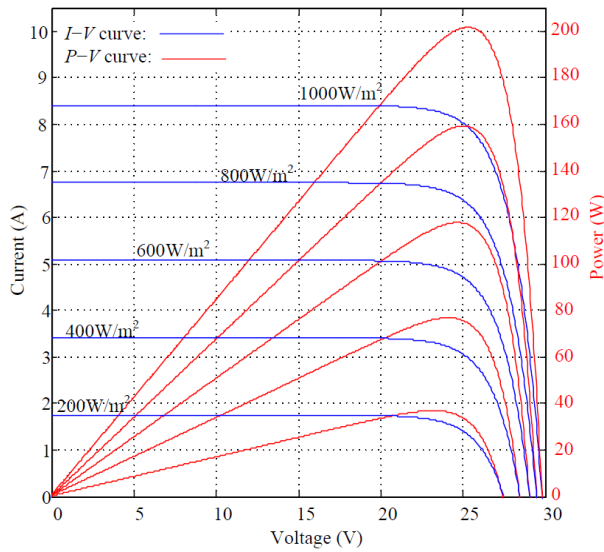
#2B-36., No.5, Sec.5, Xin-yi Road., Taipei 11011, Taiwan, R.O.C.

Tel: +886-2-27208862 ; Fax: +886-2-27206380

<http://www.apluspvt.com>

Mail: [aplus@apluspvt.com](mailto:aplus@apluspvt.com)

## Light weight solar corrugate metal roofing

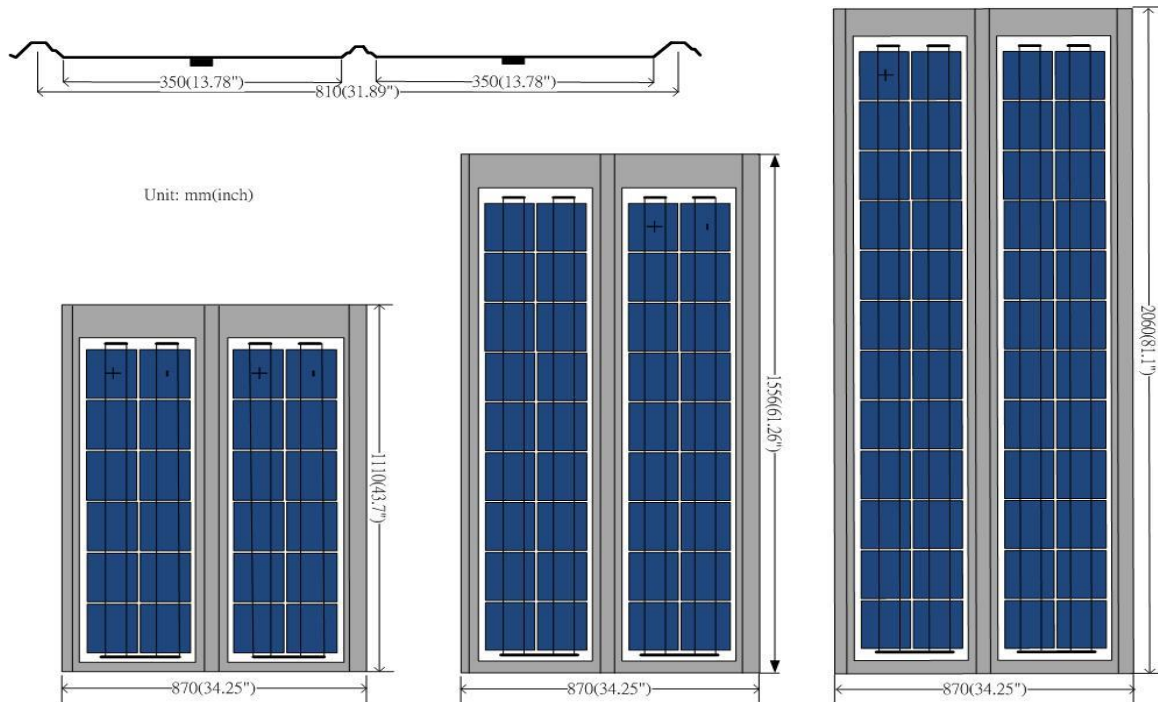


Temperature Coefficient of Isc: 0.0686%/°C  
 Temperature Coefficient of Voc: -0.362%/°C  
 Power Temperature Coefficient: -0.4359%/°C  
 NOCT: 43.6 ± 1°C

ABSOLUTE MAXIMUM RATINGS	
Parameters	Rating
Operating Temperature (°C)	-40 ~ +90
Fire Class	C
Mechanical Load Limits (lb/ft <sup>2</sup> )	33

Standard Test Conditions: AM1.5, 25°C, 1000W/m<sup>2</sup>

MECHANICAL CHARACTERISTICS	AP-PVROOF-319	AP-PVROOF-315	AP-PVROOF-522
Dimensions (mm/inch)	1110x870/43.7x34.25	1586x870/61.26x34.25	2060x870/81.1x34.25
Weight (kg)	7	10	15.5
Packing	50	50	50
20" Container	1000	500	500



APLUS ENERGY CO., LTD.

#2B-36., No.5, Sec.5, Xin-yi Road., Taipei 11011, Taiwan, R.O.C.

Tel: +886-2-27208862 ; Fax: +886-2-27206380

<http://www.apluspvt.com>

Mail: [aplus@apluspvt.com](mailto:aplus@apluspvt.com)